

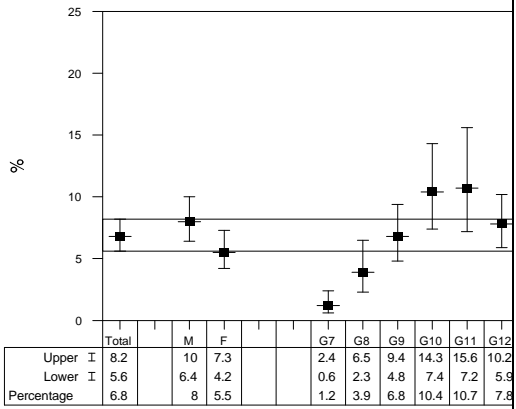
## Past Year Use of Hallucinogens: LSD, PCP and Other Hallucinogens

(Tables 3.5.14–3.5.16; Figures 3.5.15–3.5.18)

	Hallucinogen Use in 1999 (G7-13)	Trends in Hallucinogen Use (G7, 9, 11, 13)
Total Sample	<p>The most commonly used hallucinogens are substances other than LSD or PCP, such as mescaline and psilocybin, reported by 13.8% of students. LSD use is reported by 6.8% of students, and 3.0% report using PCP. These percentages represent about 127,400, 62,400 and 27,900 Ontario students in grades 7 through 13, respectively.</p>	<p>The use of hallucinogens has been on an upswing since 1993. Although all three hallucinogens increased in use during the early 1990s, only the use of other hallucinogens continued to rise in 1997 and again in 1999 (from 10.1% in 1997 to 13.6% in 1999). The increase in other hallucinogen use is especially sizeable since the early 1990s.</p> <p>Unlike other drugs addressed in this report, the use of LSD, PCP, and other hallucinogens in 1999 is not much lower than rates found during the late 1970s. Indeed, the use of other hallucinogens in 1999 is the highest recorded since 1977.</p>
Gender	<p>LSD and other hallucinogens use significantly differs by gender, with males more likely to use than females (8.0% vs 5.5%) for LSD and 16.2% vs.11.4% for other hallucinogens. PCP use does not differ by gender.</p>	<p>Between 1997 and 1999, there were no significant changes in use of hallucinogens among males or females.</p> <p>However, the increasing trend in other hallucinogen use since 1993 still holds among males (from 3.9% to 14.7%) and females (from 2.3% to 12.5%).</p>

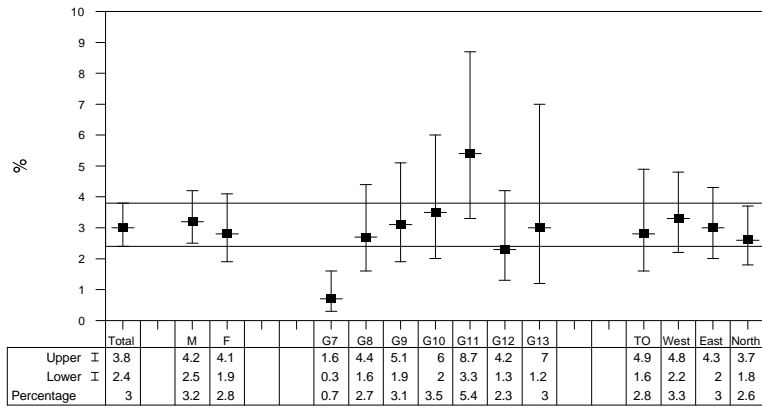
Grade	Use of each of the three hallucinogens differs significantly by grade. Rates of LSD use vary from 1.2% of 7 <sup>th</sup> -graders to 10.7% of 11 <sup>th</sup> -graders; PCP use varies from 0.7% of 7 <sup>th</sup> -graders to 5.4% of 11 <sup>th</sup> -graders; other hallucinogen use varies from 0.9% of 7 <sup>th</sup> -graders to 24.7% of 13 <sup>th</sup> -graders	The use of other hallucinogens increased significantly among 11 <sup>th</sup> -graders (from 17.0% in 1997 to 22.7% in 1999). Also, 13 <sup>th</sup> -graders showed a large, but not statistically significant increase (from 12.9% to 24.7%). The use of LSD and PCP did not change significantly within the grades.  The magnitude of increase in other hallucinogen use during the 1990s is striking for students in grades 9, 11, and 13.
Region	Use of the three hallucinogenic substances does not significantly differ by region.	Of the three substances, only students from the North showed a significant change between 1997 and 1999 – with use of other hallucinogens increasing from 8.8% to 14.5%. (Although Toronto students reported increases in all three substances, due to large sampling error these changes were not statistically significant.) However, between 1993 and 1999 the use of hallucinogens significantly increased among students from the West (from 3.4% to 13.7%), the East (from 2.9% to 13.8%), and the North (from 6.6% to 14.5%).
Frequency of Use, 1999	Among users of hallucinogenic substances, up to one in five used these substances 10 or more times during the 12 months before the survey. Still, the majority of users report use only once or twice during the past year, 65% for PCP, 52% for LSD and 46% for other hallucinogens.	

Figure 3.5.15  
Past Year LSD Use by Sex, Grade and Region



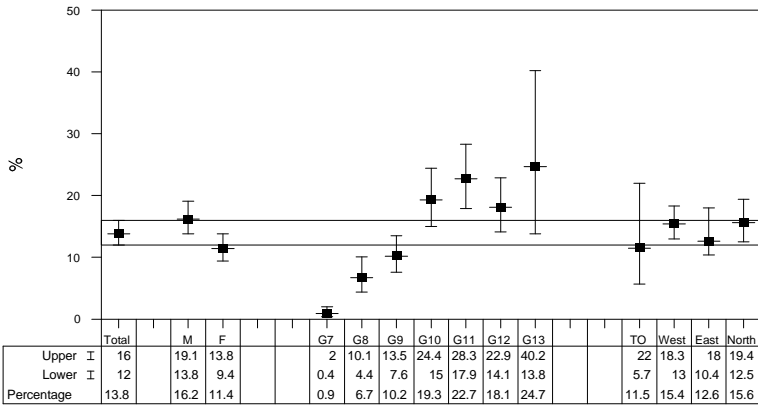
Bars represent 95% confidence intervals; horizontal bar represents 95% CI for total estimate

Figure 3.5.16  
Past Year PCP Use by Sex, Grade and Region, OSDUS, 1999



Bars represent 95% confidence intervals; horizontal bar represents 95% CI for total estimate

Figure 3.5.17  
Past Year Other Hallucinogen Use by Sex, Grade and Region, OSDUS, 1999



Bars represent 95% confidence intervals; horizontal bar represents 95% CI for total estimate

**Table 3.5.14: Percentage Reporting LSD Use During the Past 12 Months**

Year		1977	1979	1981	1983	1985	1987	1989	1991	1993	1995	1997
(N)		(4687)	(4794)	(3270)	(4737)	(4154)	(4267)	(3915)	(3945)	(3571)	(3870)	(3945)
Total		<b>6.1</b>	<b>8.6</b>	<b>10.2</b>	<b>8.6</b>	<b>7.4</b>	<b>5.9</b>	<b>5.9</b>	<b>5.2</b>	<b>6.9</b>	<b>9.2</b>	<b>10.4</b>
(95% ci)		±0.7	±0.8	±1.8	±1.1	±1.3	±1.4	±1.5	±1.0	±1.3	±2.1	±2.5
Sex	Male	<b>7.3</b>	<b>10.4</b>	<b>11.4</b>	<b>10.8</b>	<b>8.7</b>	<b>7.8</b>	<b>6.8</b>	<b>5.9</b>	<b>8.1</b>	<b>10.4</b>	<b>10.4</b>
		±1.0	±1.2	±1.2	±1.3	±1.5	±2.1	±1.9	±1.2	±1.6	±1.9	±2.5
	Female	<b>5</b>	<b>6.8</b>	<b>8.9</b>	<b>6.4</b>	<b>6</b>	<b>4</b>	<b>4.9</b>	<b>4.5</b>	<b>5.7</b>	<b>7.9</b>	<b>7.9</b>
		±0.9	±1.0	±3.0	±1.4	±1.5	±1.1	±1.5	±1.2	±1.5	±2.5	±2.5
Grade	7	<b>2.5</b>	<b>4.3</b>	<b>2</b>	<b>2</b>	<b>2</b>	<b>2.7</b>	<b>1.6</b>	<b>0.9</b>	<b>1.2</b>	<b>1.7</b>	<b>1.7</b>
		±0.9	±1.1	±1.2	±1.1	±1.1	±1.2	±0.4	±1.1	±0.1	±0.8	±0.8
	8	0	0	0	0	0	0	0	0	0	0	0
		0	0	0	0	0	0	0	0	0	0	0
	9	<b>5.8</b>	<b>8.7</b>	<b>10.7</b>	<b>9.5</b>	<b>5.9</b>	<b>4.6</b>	<b>6.2</b>	<b>3.6</b>	<b>6.3</b>	<b>7.5</b>	<b>7.5</b>
		±1.2	±1.4	±2.3	±1.2	±2.1	±2.8	±3.2	±2.3	±3.6	±3.4	±3.4
	10	0	0	0	0	0	0	0	0	0	0	0
		0	0	0	0	0	0	0	0	0	0	0
	11	<b>10.7</b>	<b>14.8</b>	<b>16</b>	<b>16.5</b>	<b>13.5</b>	<b>9.8</b>	<b>8.5</b>	<b>9.9</b>	<b>11.5</b>	<b>18.5</b>	<b>18.5</b>
		±1.9	±2.2	±4.3	±3.4	±3.5	±4.2	±3.2	±2.0	±1.5	±5.7	±5.7
	12	0	0	0	0	0	0	0	0	0	0	0
		0	0	0	0	0	0	0	0	0	0	0
	13 (OAC)	<b>6.5</b>	<b>6.7</b>	<b>6.5</b>	<b>9.3</b>	<b>8.7</b>	<b>6.4</b>	<b>8.7</b>	<b>6.8</b>	<b>8.4</b>	<b>6.8</b>	<b>6.8</b>
		±1.8	±1.8	±1.8	±2.5	±3.4	±1.2	±3.3	±2.5	±3.6	±2.5	±2.5
Region	Toronto	—	—	<b>5.8</b>	<b>7.6</b>	<b>6.5</b>	<b>2.9</b>	<b>4.5</b>	<b>3.9</b>	<b>3.2</b>	<b>5.5</b>	<b>5.5</b>
				±3.2	±3.6	±2.1	±2.2	±1.6	±2.6	±1.9	±4.7	±4.7
	West	—	—	<b>14.3</b>	<b>9.4</b>	<b>9.6</b>	<b>6.4</b>	<b>6.4</b>	<b>5.8</b>	<b>8.6</b>	<b>10.2</b>	<b>10.2</b>
				±3.9	±1.1	±2.8	±2.7	±2.6	±1.5	±2.6	±4.0	±4.0
	East	—	—	<b>8.9</b>	<b>7.8</b>	<b>4.2</b>	<b>6.2</b>	<b>5</b>	<b>4.3</b>	<b>5.6</b>	<b>10.2</b>	<b>10.2</b>
				±2.0	±1.9	±1.4	±0.8	±2.6	±1.6	±1.5	±2.1	±2.1
	North	—	—	<b>9.6</b>	<b>9.7</b>	<b>8.8</b>	<b>9.5</b>	<b>8.4</b>	<b>8.7</b>	<b>11.2</b>	<b>10.3</b>	<b>10.3</b>
				±3.0	±2.7	±2.2	±7.0	±4.8	±2.9	±3.9	±2.7	±2.7

Notes: (1) regional stratification differed in 1977 and 1979 and are therefore not presented; (2) ± entries are 95% confidence intervals; (3); no significant differences between 1997 and 1999.

Q: In the **last 12 months**, how often did you use **LSD** or “acid”?

Source: OSDUS, Centre for Addiction & Mental Health

**Table 3.5.15: Percentage Reporting PCP Use During the Past 12 Months, 1981-1999**

Year		1981	1983	1985	1987	1989	1991	1993	1995	1997
(N)		(3270)	(4737)	(4154)	(4267)	(3915)	(3945)	(3571)	(3870)	(3990)
Total		<b>2.5</b>	<b>2</b>	<b>1.7</b>	<b>1.3</b>	<b>1.1</b>	<b>0.5</b>	<b>0.6</b>	<b>1.7</b>	<b>2</b>
(95% ci)		±0.8	±0.5	±0.4	±0.6	±0.4	±0.2	±0.3	±0.8	±0.6
Sex	Male	<b>3</b>	<b>2.4</b>	<b>2.1</b>	<b>2</b>	<b>1.5</b>	<b>0.9</b>	<b>0.7</b>	<b>2.1</b>	<b>2.4</b>
		±1.0	±0.7	±0.6	±0.8	±0.7	±0.3	±0.5	±1.0	±0.6
	Female	<b>1.9</b>	<b>1.7</b>	<b>1.1</b>	<b>0.6</b>	<b>0.7</b>	†	<b>0.6</b>	<b>1.3</b>	<b>1.7</b>
		±0.9	±0.6	±0.4	±0.5	±0.4		±0.4	±0.7	±0.9
Grade	7	<b>1.2</b>	<b>1</b>	<b>1.4</b>	<b>1.2</b>	<b>0.7</b>	†	†	<b>0.6</b>	<b>0.6</b>
		±1.4	±0.4	±1.2	±1.1	±0.3			±1.0	±0.7
	8	0	0	0	0	0	0	0	0	0
		0	0	0	0	0	0	0	0	0
	9	<b>2.8</b>	<b>3</b>	<b>1.4</b>	<b>1.3</b>	<b>1.7</b>	<b>1</b>	†	<b>1.7</b>	<b>1.8</b>
		±1.7	±0.3	±0.3	±1.2	±0.8	±0.5		±1.2	±1.5
	10	0	0	0	0	0	0	0	0	0
		0	0	0	0	0	0	0	0	0
	11	<b>3.4</b>	<b>2.6</b>	<b>2.4</b>	<b>1.6</b>	<b>1.1</b>	<b>0.6</b>	<b>0.9</b>	<b>3.1</b>	<b>3.6</b>
		±1.0	±1.8	±0.4	±1.0	±1.1	±0.2	±1.0	±2.2	±1.5
	12	0	0	0	0	0	0	0	0	0
		0	0	0	0	0	0	0	0	0
	13 (OAC)	<b>1</b>	<b>1.1</b>	<b>1.3</b>	<b>0.5</b>	<b>0.6</b>	†	<b>1.3</b>	<b>0.8</b>	<b>1.6</b>
		±0.6	±1.0	±0.6	±0.1	±0.2		±0.4	±0.3	±1.5
Region	Toronto	<b>1</b>	<b>1.7</b>	<b>2.2</b>	<b>0.9</b>	<b>0.6</b>	<b>0.9</b>	†	<b>0.8</b>	<b>0.9</b>
		±0.7	±1.2	±0.4	±1.1	±0.9	±0.6		±0.4	±0.9
	West	<b>3.4</b>	<b>2</b>	<b>1.8</b>	<b>1.6</b>	<b>1.1</b>	†	<b>0.7</b>	<b>2.1</b>	<b>2.5</b>
		±1.7	±0.5	±0.7	±1.0	±0.6		±0.7	±1.6	±1.0
	East	<b>2.6</b>	<b>2.4</b>	<b>1</b>	<b>0.8</b>	<b>1.5</b>	†	<b>0.8</b>	<b>1.8</b>	<b>2.5</b>
		±1.3	±1.1	±0.4	±0.8	±0.8		±0.5	±1.4	±1.4
	North	<b>2.5</b>	<b>1.3</b>	<b>2</b>	<b>1.9</b>	<b>1.1</b>	<b>2.2</b>	†	<b>0.7</b>	<b>1.6</b>
		±2.4	±1.7	±2.0	±1.0	±0.9	±1.4		±1.8	±2.5

Note: (1) PCP use was not queried in 1977 or 1979; (2) ± entries are 95% confidence intervals; (3) no significant differences between 1997 and 1999; (4) † estimate suppressed or less than 0.5%.

Q: In the **last 12 months**, how often did you use the drug **PCP** (also known as “Angel Dust,” “Dust,” Horse Tranquillizer,” etc.)?

Source: OSDUS, Centre for Addiction & Mental Health

**Table 3.5.16: Percentage Reporting Other Hallucinogen Use During the Past 12 Months**

---

Year	1977	1979	1981	1983	1985	1987	1989	1991	1993	1995
------	------	------	------	------	------	------	------	------	------	------

(N)	(4687)	(4794)	(3270)	(4737)	(4154)	(4267)	(3915)	(3945)	(3571)	(3870)
-----	--------	--------	--------	--------	--------	--------	--------	--------	--------	--------

---

Total	<b>4.3</b>	<b>5.3</b>	<b>4.7</b>	<b>6</b>	<b>4.8</b>	<b>4.5</b>	<b>4.3</b>	<b>3.3</b>	<b>3.1</b>	<b>7.6</b>
-------	------------	------------	------------	----------	------------	------------	------------	------------	------------	------------

(95% ci)	±0.6	±0.6	±1.4	±1.1	±0.9	±1.3	±1.2	±0.6	±0.8	±1.9
----------	------	------	------	------	------	------	------	------	------	------

---

Sex	Male	<b>6</b>	<b>6.4</b>	<b>5.5</b>	<b>8.1</b>	<b>5.8</b>	<b>6.1</b>	<b>4.6</b>	<b>4.2</b>	<b>3.9</b>	<b>9.4</b>
-----	------	----------	------------	------------	------------	------------	------------	------------	------------	------------	------------

		±0.9	±0.9	±1.7	±1.1	±1.3	±2.0	±1.4	±1.2	±0.8	±2.2
--	--	------	------	------	------	------	------	------	------	------	------

Female	<b>2.9</b>	<b>4.2</b>	<b>3.7</b>	<b>3.8</b>	<b>3.6</b>	<b>3.1</b>	<b>3.9</b>	<b>2.3</b>	<b>2.3</b>	<b>5.9</b>
	±0.7	±0.8	±1.4	±0.9	±0.9	±1.1	±1.3	±0.9	±1.2	±1.9

---

Grade	<b>7</b>	<b>1.1</b>	<b>2</b>	<b>0.9</b>	<b>0.9</b>	<b>1.1</b>	<b>1.2</b>	<b>0.9</b>	†	†	<b>0.9</b>
		±0.6	±0.8	±0.3	±0.9	±0.3	±0.6	±0.2			±0.7

8	0	0	0	0	0	0	0	0	0	0
	0	0	0	0	0	0	0	0	0	0

9	<b>3.4</b>	<b>4</b>	<b>4.8</b>	<b>6.4</b>	<b>4.1</b>	<b>3</b>	<b>3.6</b>	<b>1.9</b>	<b>1.5</b>	<b>4.7</b>
---	------------	----------	------------	------------	------------	----------	------------	------------	------------	------------

±0.9    ±1.0    ±2.5    ±1.9    ±1.8    ±2.3    ±2.5    ±1.3    ±0.4    ±1.6

10        Õ        Õ        Õ        Õ        Õ        Õ        Õ        Õ        Õ        Õ

Õ        Õ        Õ        Õ        Õ        Õ        Õ        Õ        Õ        Õ

11        **8**        **10.7**        **7.3**        **11.5**        **8.4**        **7.6**        **7.3**        **6.5**        **6.1**        **16.5**

±1.7    ±1.9    ±2.4    ±3.7    ±2.4    ±3.8    ±2.0    ±1.1    ±2.2    ±5.9

12        Õ        Õ        Õ        Õ        Õ        Õ        Õ        Õ        Õ        Õ



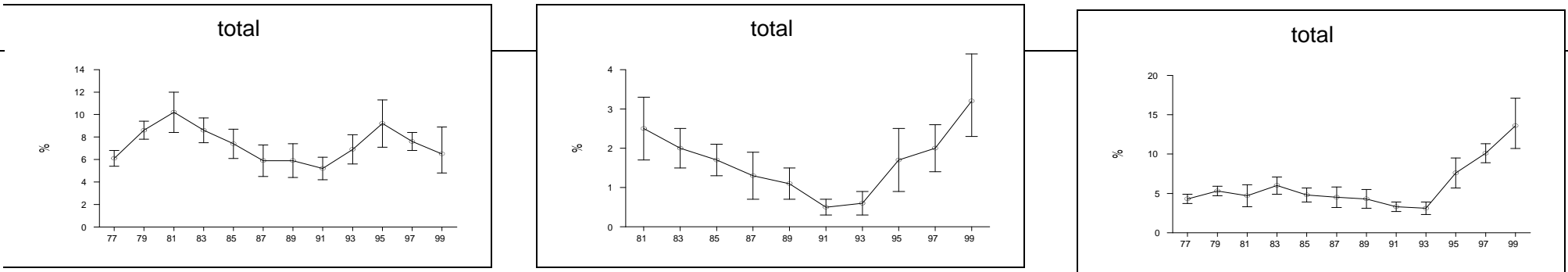
		0	0	0	0	0	0	0	0	0	0
13 (OAC)		<b>6.9</b>	<b>5.5</b>	<b>3.4</b>	<b>8.4</b>	<b>6.3</b>	<b>8.2</b>	<b>7.2</b>	<b>4.9</b>	<b>5.6</b>	<b>7.2</b>
		±1.9	±1.7	±2.5	±0.7	±2.0	±0.9	±4.1	±1.3	±3.1	±3.4

---

Region	Toronto	—	—	<b>3.1</b>	<b>5.2</b>	<b>5.9</b>	<b>2.6</b>	<b>3.8</b>	<b>2.9</b>	<b>1.2</b>	<b>4.9</b>
				±3.0	±1.8	±2.7	±2.5	±1.6	±1.7	±0.7	±3.9
	West	—	—	<b>6.4</b>	<b>7.5</b>	<b>4.4</b>	<b>4.1</b>	<b>4.6</b>	<b>3.3</b>	<b>3.4</b>	<b>7.3</b>

			$\pm 2.7$	$\pm 2.4$	$\pm 1.6$	$\pm 1.3$	$\pm 2.0$	$\pm 0.9$	$\pm 0.7$	$\pm 2.4$	$\pm 2.1$
East	—	—	<b>4.2</b>	<b>4.5</b>	<b>4.3</b>	<b>6.7</b>	<b>4.2</b>	<b>3.7</b>	<b>2.9</b>	<b>8</b>	<b>11</b>
			$\pm 2.1$	$\pm 1.2$	$\pm 1.1$	$\pm 3.9$	$\pm 2.6$	$\pm 1.2$	$\pm 1.5$	$\pm 2.5$	$\pm 2.2$
North	—	—	<b>3.4</b>	<b>5.9</b>	<b>4.9</b>	<b>4.5</b>	<b>4</b>	<b>2.4</b>	<b>6.6</b>	<b>14.4</b>	<b>8.8</b>

±3.2    ±2.3    ±1.4    ±2.1    ±2.6    ±2.5    ±7.1    ±14.6    ±4.1



Notes: (1) regional stratification differed in 1977 and 1979 and are therefore not presented; (2) ± entries are 95% confidence intervals; (3) 1997 vs. 1999 significant differences, \*p< .05, \*\*p< .01, \*\*\*p< .05; (4) † estimate suppressed or less than 0.5%.

Q: In the last 12 months, how often did you use **hallucinogens**, other than LSD or PCP (for example, Mescaline and Psilocybin, "Magic Mushrooms," Mesc," etc.)?

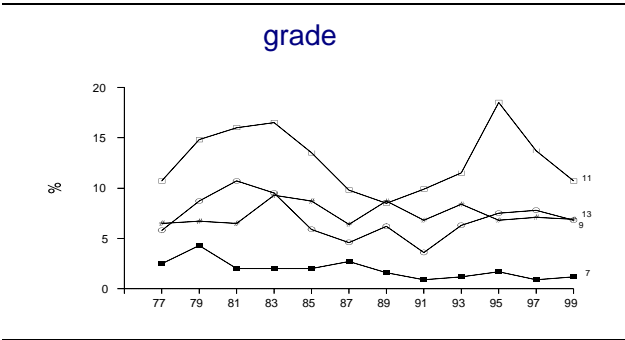
Source: OSDUS, Centre for Addiction & Mental Health

**Figure 3.5.18**  
**Past Year Hallucinogens Use, (G7, 9, 11, 13), OSDUS, 1977-1999**

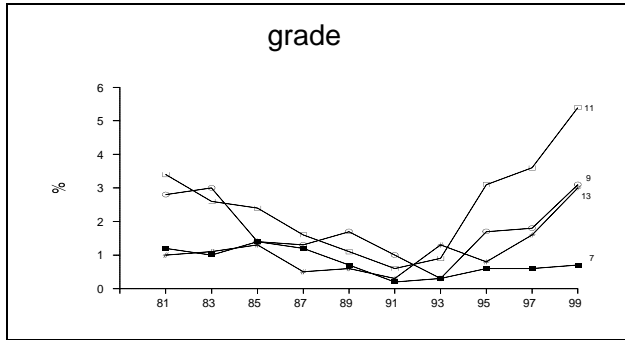
LSD

PCP

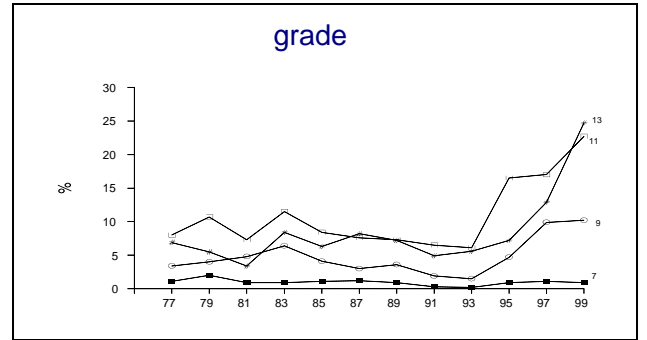
Other Hallucinogens



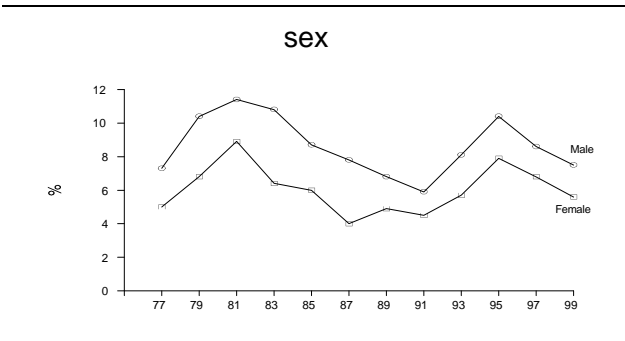
LSD



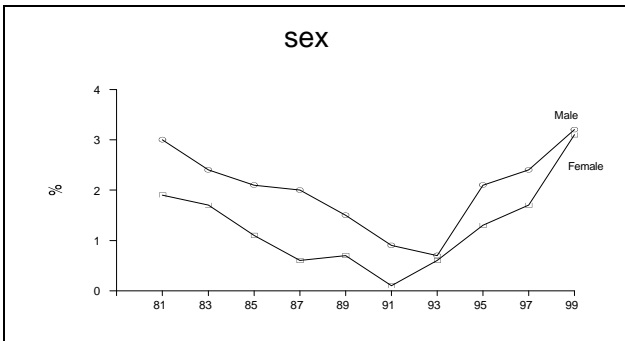
PCP



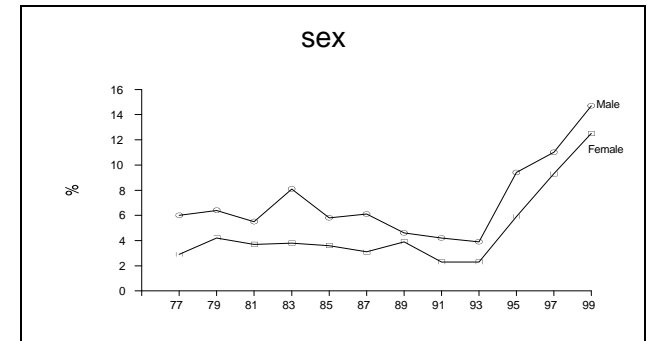
Other Hallucinogens



sex



sex



sex